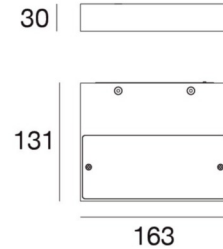
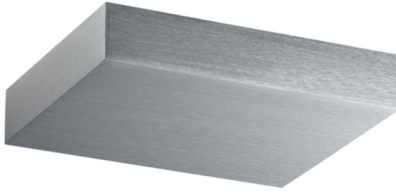


Regolo 160



Wandleuchten | 220-240 V | 1 topLED 18 W DC - 18 W AC | CRI 80
9037



Technische Daten	
Jahr der Verwirklichung	2019
Typ	Wandleuchten
Installationsposition	Wand
Installationsumgebung	Indoor
Lichtquelle	LED
Optik	General Lighting
Light emission direction	upward
Lampenleistung	18 W
Lichtstrom (Lichtquelle)	2025 lm
Frequency	60 - 50 Hz
Ähnlichste Farbtemperatur / Tone	3000 K
Farbwiedergabeindex	80 Ra
Gleichstrom/Gleichspannung	AC
Isolierklasse	1
IP	IP40
Glühdrahtprüfung	850°
Direkte Montage auf normal entflammaren Oberflächen	Nein
CE	Ja
Einschließlich Driver	Driver
Leuchte dimmbar	Nein
Schwenkbarkeit	Nein
Drehbarkeit	Nein
Begehbarkeit	Nein
Überrollbarkeit	Nein
Einschließlich Kabel	Nein
Harzbeschichtung	Nein
Typ Lichtabstrahlung	Einflammig
Nettogewicht	0.775 Kg
Schutz vor elektrostatischen Entladungen	Nein
Schutz vor Stoßspannungen	Nein

Oberfläche Gehäuse

Material	Aluminium
Bearbeitungstyp	Eloxierung

Oberfläche Diffusor

Material	Polycarbonat UV-beständige
Farbe	Opal
Bearbeitungstyp	Sandstrahlen

Oberfläche Fassung

Material	Eisen
Farbe	Zink
Bearbeitungstyp	Waschen

Regolo 160



Wandleuchten | 220-240 V | 1 topLED 18 W DC - 18 W AC | CRI 80
9037

Single emission wall lights for indoor application. The warm white LED light source with a general lighting light distribution is composed of 1 topped LEDs with CCT of 3000 K and a CRI 80; the source luminous flux is 2025 lm, with a 112.5 lm/W nominal luminous efficacy.

The device body is made of aluminium, processed by means of anodisation; the diffuser is made of uv resistant polycarbonate with a sandblasting treatment; the mounting frame is made of iron, with a zinc finish, processed by means of washing. The ingress protection degree is IP40; the total weight is of 0.775 kg.

The total absorbed power is 18 W.

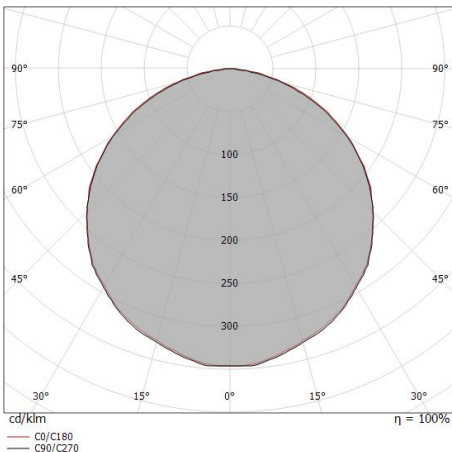
The device features protection class I and can be wall lights-mounted.

Compliant with the EN 60598-1 standard and its specific provisions.

Illuminotechnical Eigenschaften	
Light Output Ratio (LOR)	73 %
Lichtstrom (Lichtquelle)	2025 lm
Leuchten Lichtstrom	1485.02 lm
Consumption	18 W
Leuchten Lichtausbeute	82 lm/W
Farbtemperatur	3000 K
Standard Deviation of Colour Matching	3 Step MacAdam
Farbwiedergabeindex	80 Ra
Verbindungstemperatur (Leuchte)	80
Standardumgebungstemperatur	20
LED Life / Failure Ratio	
L70 B20 C0 72.5h	

UGR	
UGR axial	> 28
UGR transversal	> 28
X=4H Y=8H	S=0.25H
Reflection factor	70/50/20

OPTICAL	
Light distribution simmetry	Symmetrical
Optik C0/C180	114°



Distance [m]	Cone diameter [m]	Illuminance [lx]
0.5	1.55	E(0°) 2059
	1.56	E(C90) 57.1° 165
		E(C0) 57.4° 161
1.0	3.09	E(0°) 515
	3.13	E(C90) 57.1° 41
		E(C0) 57.4° 40
1.5	4.64	E(0°) 229
	4.69	E(C90) 57.1° 18
		E(C0) 57.4° 18
2.0	6.18	E(0°) 129
	6.25	E(C90) 57.1° 10
		E(C0) 57.4° 10
2.5	7.73	E(0°) 82
	7.82	E(C90) 57.1° 7
		E(C0) 57.4° 6
3.0	9.27	E(0°) 57
	9.38	E(C90) 57.1° 5
		E(C0) 57.4° 4

Distance [m] Cone diameter [m] Illuminance [lx]

— C0/C180 (Half-peak divergence: 114.8°)
- - C90/C270 (Half-peak divergence: 114.2°)